



**Bobcat®**

ATTACHMENT

**SOIL  
CONDITIONER**



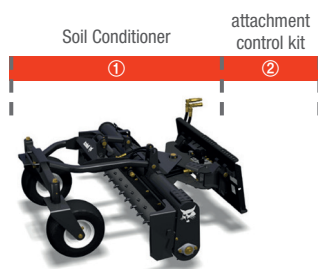
***One Tough Animal®***

# SOIL CONDITIONER - SPECIFICATIONS

## Description

A versatile, cost-effective landscaping attachment. It saves time and labour when smoothing ruts, moving material or levelling mounds. Produces a perfect bed for seeding and sodding.

## Requirements



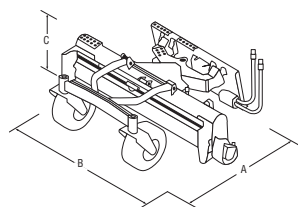
Soil Conditioner: Loader must be equipped with an attachment control kit.

## Features & Benefits

- Produces a perfect bed for seeding or laying grass turf.
- Windrows and separates rocks and other debris.
- Impressively grades and levels topsoil with ease in floating or fixed mode per landscape requirement.
- Tears out old sod.
- Pulverizes dirt clumps.
- Forward and reverse raking action.
- Roller bar follows ground contours perfectly.
- Flip-up front bolster lets you get close to buildings and saves spaceduring transport.
- Direct-drive motor eliminates chain and sprocket problems.
- Attachable end plates for box-blade effect.

## Specifications

	Soil conditioner, 122 cm, Manual	Soil conditioner, 183 cm, Manual	Soil conditioner, 183 cm, Hydraulic	Soil conditioner, 183 cm, Hydraulic, High flow	Soil conditioner, 214 cm, Hydraulic	Soil conditioner, 214 cm, Hydraulic, High flow
Overall length (A)	1471 mm	1725 mm	1725 mm	1725 mm	1725 mm	1725 mm
Overall width (B)	1539 mm	2190 mm	2190 mm	2190 mm	2495 mm	2495 mm
Height (C)	733 mm	761 mm	761 mm	761 mm	755 mm	755 mm
Working width (Fully angled)	1161 mm	1651 mm	1651 mm	1651 mm	2431 mm	2431 mm
Degree of angle	25 deg. left or right	25 deg. left or right	25 deg. left or right	25 deg. left or right	25 deg. left or right	25 deg. left or right
Number of teeth	81	121	121	121	141	141
Operating weight	288 kg	504 kg	504 kg	504 kg	575 kg	575 kg
Hydraulic requirements	10-18 gpm	13-37 gpm	13-37 gpm	25-37 gpm	18-37 gpm	30-37 gpm
Tires	Pneumatic	Pneumatic	Foam-filled	Foam-filled	Foam-filled	Foam-filled
Float or lock position	Lock only	Both	Both	Both	Both	Both
Depth adjustment	Manual	Manual	Hydraulic	Hydraulic	Hydraulic	Hydraulic
Angle adjustment	Manual	Manual	Hydraulic	Hydraulic	Hydraulic	Hydraulic



Approved machines: Skid-Steer Loader, Compact Track Loader, Mini Track Loader, Toolcat™ Utility Work Machine, TelescopicHandler

## Compatibility Charts

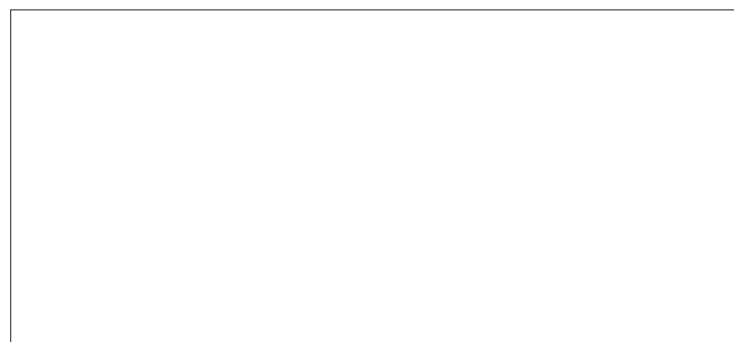
	Skid Steer Loaders												Compact Track Loaders								
	S16	S18	S70	S100	S450	S510	S530	S550/H	S570/H	S590/H	S630/H	S650/H	S770/H	S850/H	MT55	T450	T590/H	T650/H	T770/H	T870/H	
Soil conditioner, 122 cm, manual			X	X											X						
Soil conditioner, 183 cm, manual					X	X	X	X	X	X	X	X	X			X	X	X	X		
Soil conditioner, 183 cm, hydraulic					X	X	X	X	X	X	X	X	X			X	X	X	X		
① Soil conditioner, 183 cm, hydraulic, high flow								X*	X*	X*	X*	X*	X*				X*	X*	X*		
Soil conditioner, 214 cm, hydraulic					X	X	X	X	X	X	X	X	X				X	X	X	X	
Soil conditioner, 214 cm, hydraulic, high flow											X*	X*	X*	X*				X*	X*	X*	
Note: 7-pin attachment control kit is installed as standard on high flow (h) machines.																					
② 7-pin attachment control kit				X	X	X	X	X	X	X	X	X	X	X		X	X	X	X	X	X

\* High flow machines only



### Bobcat is a Doosan company.

Doosan is a global leader in construction equipment, power and water solutions, engines, and engineering proudly serving customers and communities for more than a century. | Bobcat and the Bobcat logo are registered trademarks of Bobcat Company in the United States and various other countries. ©2020 Bobcat Company. All rights reserved.



# Bobcat®

Doosan Bobcat Korea Co., Ltd.

www.bobcat.com